

WRITTEN SOLUTIONS

Please write clearly in block capitals.

Centre number

--	--	--	--	--

Candidate number

--	--	--	--

Surname

Forename(s)

Candidate signature

GCSE MATHEMATICS

F

Foundation Tier Paper 2 Calculator

Date of Exam

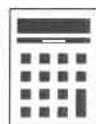
Morning

Time allowed: 1 hour 30 minutes

Materials

For this paper you must have:

- a calculator
- mathematical instruments.



Instructions

- Use black ink or black ball-point pen. Draw diagrams in pencil.
- Answer **all** questions.
- You must answer the questions in the spaces provided. Do not write outside the box around each page or on blank pages.
- Do all rough work in this book. Cross through any work you do not want to be marked.

Information

- The marks for questions are shown in brackets.
- The maximum mark for this paper is 80.
- You may ask for more answer paper, graph paper and tracing paper. These must be tagged securely to this answer book.

Advice

- In all calculations, show clearly how you work out your answer.

Answer **all** questions in the spaces provided.

1 Circle the cube number.

[1 mark]

3

8

9

16

$$1^3 = 1 \times 1 \times 1 = 1$$

$$2^3 = 2 \times 2 \times 2 = 8$$

2 On a circle, which of these is the longest?
Circle your answer.

[1 mark]

chord

circumference

diameter

radius

3 Add -5 and -3

$$-5 + (-3) = -5 - 3 = -8$$

Circle your answer.

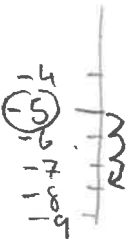
[1 mark]

-8

-2

2

8



4 Circle the unit of mass.

[1 mark]

millimetres

grams

litres

degrees

- 5 Write down all the whole numbers between 91 and 120 that have **exactly two** digits the same.

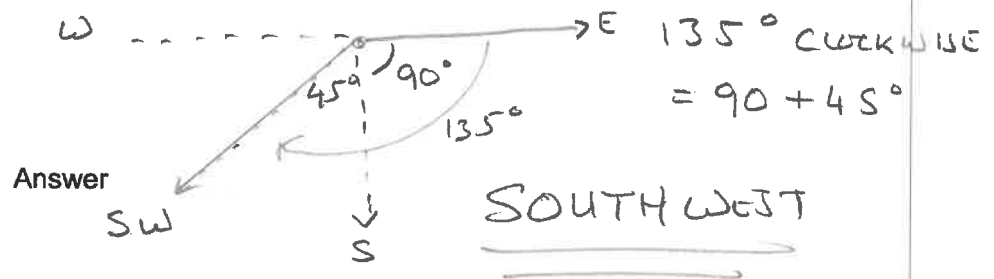
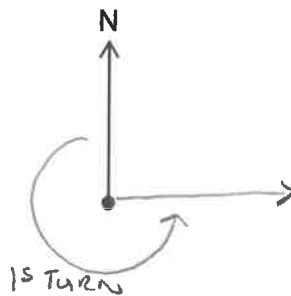
[2 marks]

91 92 93 94 95 96 97 98 (99) (100) (101) 102 103
 104 105 106 107 108 109 (110) 111 (112) (113) (114) (115)
 (116) (117) (118) (119) 120

Answer 99, 100, 101, 110, 112, 113, 114, 115, 116
 117, 118, 119

- 6 Katy is facing North.
 She does a three-quarter turn anti-clockwise.
 She then turns 135° clockwise.
 What direction is she facing now?

[2 marks]



Turn over ►

7 Here is a bank statement with three missing values.

Date	Description	Credit (£)	Debit (£)	Balance (£)
	Starting balance			37.60
13/04/2017	Salary	287.25		324.85
14/04/2017	Gas bill		50.00	274.85
17/04/2017	Council tax		61.84	213.01

Complete the bank statement.

[3 marks]

$$\text{SALARY: } 324.85 - 37.60 = 287.25$$

$$\begin{array}{r}
 324.85 - 50 = 274.85 \\
 \underline{- 61.84} \\
 213.01
 \end{array}$$

8 (a) Simplify $3a + 7b - a + 4b$

$$= 3a - a + 7b + 4b$$

[2 marks]

Answer $2a + 11b$

8 (b) Expand

$$4(2d + 5)$$

$$4 \times 2d + 4 \times 5$$

$$= 8d + 20$$

[2 marks]

Answer

$$8d + 20$$

8 (c) Factorise

$$15x + 18y$$

$$= 15 \times 2x + 18 \times y$$

$$= \cancel{3} \times 5 \times 2x + \cancel{3} \times 6 \times y = 3(5 \times 2x + 6 \times y)$$

LOOK FOR A 'COMMON FACTOR'
OF 15 AND 18

[1 mark]

Answer $3(5x + 6y)$

Turn over for the next question

Turn over ►

9 Jack and Liam each get the same pocket money.

Jack spends 75% of his.

He has £2 left.

Liam spends 40% of his.

How much does Liam have left?

[4 marks]

JACK $100\% - 75\%$ LEAVES $25\% = \pounds 2$

SO JACK MUST HAVE HAD: $4 \times \pounds 2 = \pounds 8 = 100\%$

LIAM SPENDS 40% OF $\pounds 8.00$

$10\% = \pounds 8.00 \div 10 = \pounds 0.80$

$40\% = 4 \times 0.80 = \pounds 3.20$

$\pounds 8 - \pounds 3.20 = \pounds 4.80$

Answer £ 4.80

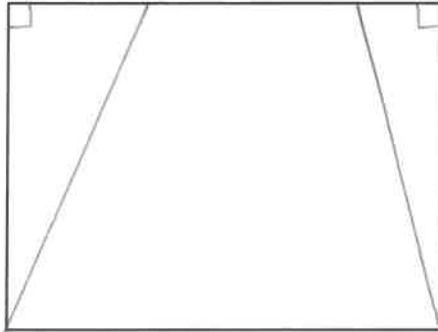
- 10** Draw **two** straight lines inside the rectangle to split it into
1 trapezium
and
2 right-angled triangles.

[2 marks]

Practise on this diagram.



Put your answer on this diagram.



Turn over for the next question

Turn over ►

11

Jo sold 132 mugs.

One quarter of the mugs were small.

The rest were large.

Jo made a profit of £2.45 on each small mug.

She made **twice** as much profit on each large mug.

Work out her total profit.

[6 marks]

SMALL MUGS:

$$132 \div 4 = 33$$

$$\text{LARGE} = 132 - 33 = 99$$

$$\text{PROFIT ON SMALL MUG} = \pounds 2.45$$

$$\text{PROFIT ON LARGE MUG} = \pounds 2.45 \times 2 = \pounds 4.90$$

TOTAL PROFIT:

$$\pounds 2.45 \times 33 + \pounds 4.90 \times 99$$

$$= 80.85 + 485.10$$

$$= 565.95$$

Answer £ 565.95

- 12 Write down the integer values of x where $1 \leq x < 7$

[2 marks]

$$x \Rightarrow 1, 2, 3, 4, 5, 6 \quad x < 7 \text{ so cannot be } 7$$

Answer 1, 2, 3, 4, 5, 6

- 13 Increase 400 by 37%

[2 marks]

$$37\% \text{ of } 400 = 400 \div 100 \times 37 = 148$$

$$\text{INCREASE: } 400 + 148 = 548$$

OR//

$$400 \times 1.37 = 548$$

Answer 548

- 14 What is the **maximum possible** order of rotational symmetry of a quadrilateral?

Circle your answer.

[1 mark]

1

2

4

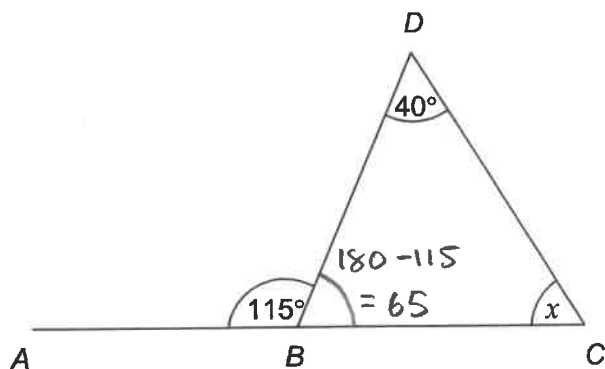
8

FOR SQUARE

Turn over for the next question

Turn over ►

- 15 Han is trying to work out the size of angle x .



Not drawn
accurately

- 15 (a) He assumes that ABC is a straight line.

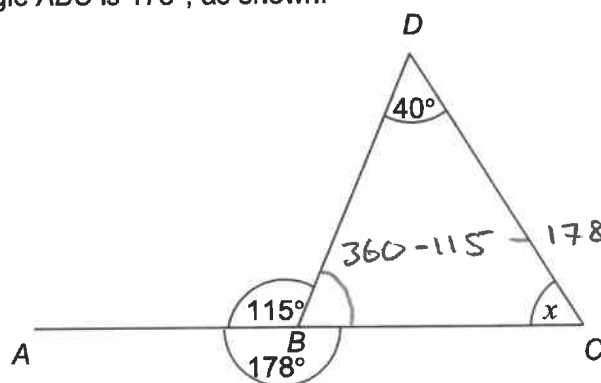
What answer should he get?

[2 marks]

ANGLES ON STRAIGHT LINE, $180 - 115 = 65^\circ$
 ANGLES IN TRIANGLE ADD TO 180 SO...
 $180 - 40 - 65 = 75$ GIVES x

Answer 75° degrees

- 15 (b) In fact, angle ABC is 178° , as shown.



Not drawn
accurately

What effect does this have on the size of angle x ?

[1 mark]

NOW FOR x , $180 - 40 - 67$
 $= 73$

SO x HAS DECREASED BY 2°

16 The speed of the International Space Station is 27 576 kilometres per hour.

16 (a) The station travels 42 600 kilometres in one orbit.

Work out the number of full orbits the station does in one day.

[3 marks]



$$S = 27576 \text{ km/h}$$

$$D = 42600$$

TRAVELS 27576 km EVERY HOUR SO IN 24 HOURS

IF TRAVELS $27576 \times 24 = 661824$

ORBITS = $661824 \div 42600 = 15.54$ SO

Answer 15 FULL ORBITS

16 (b) Convert 27 576 kilometres per hour into metres per second.

[3 marks]

$$27576 \text{ km} \times 1000 = 27576000 \text{ m IN ONE HOUR}$$

$$\text{SO } 27576000 \div 60 = 459600 \text{ m IN ONE MINUTE}$$

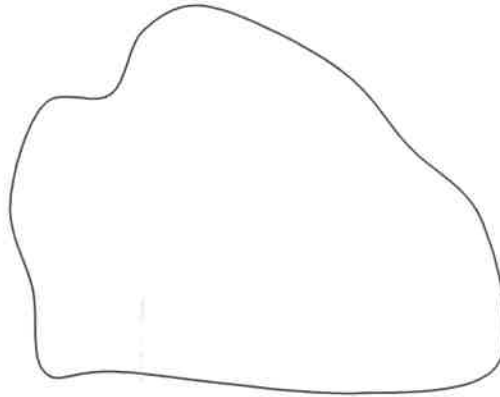
$$\text{SO } 459600 \div 60 = 7660 \text{ m IN ONE MINUTE}$$

Answer 7660 m/s

Turn over for the next question

Turn over ►

17 Here is a shape.

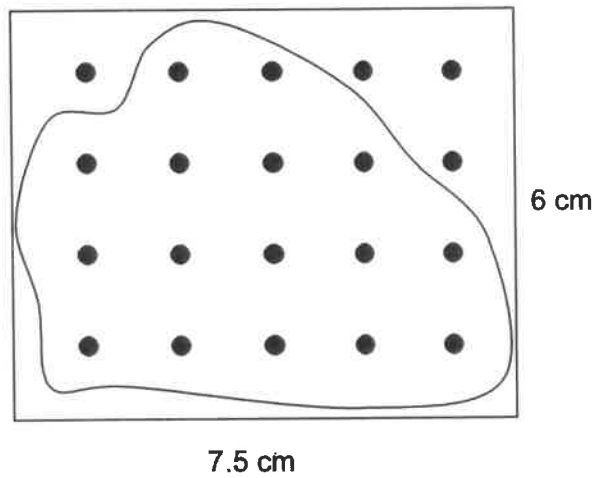


A method to estimate the area of the shape is shown below.

Put the shape onto a rectangular grid of dots.

Write the number of dots in the shape as a fraction of the total number of dots.

Work out this fraction of the area of the rectangle.



16 DOTS INSIDE

TOTAL DOTS = 20

17 (a) Use this method to estimate the area of the shape.

[3 marks]

$$16 \text{ INSIDE OUT OF TOTAL OF 20 DOTS}$$

$$= \frac{16}{20} = \frac{8}{10} = \frac{4}{5} \quad \text{TOTAL AREA} = 7.5 \times 6$$

$$= 45$$

$$\frac{4}{5} \times 45 = 36$$

Answer 36 cm²

17 (b) How could you improve this method to give a more reliable answer?

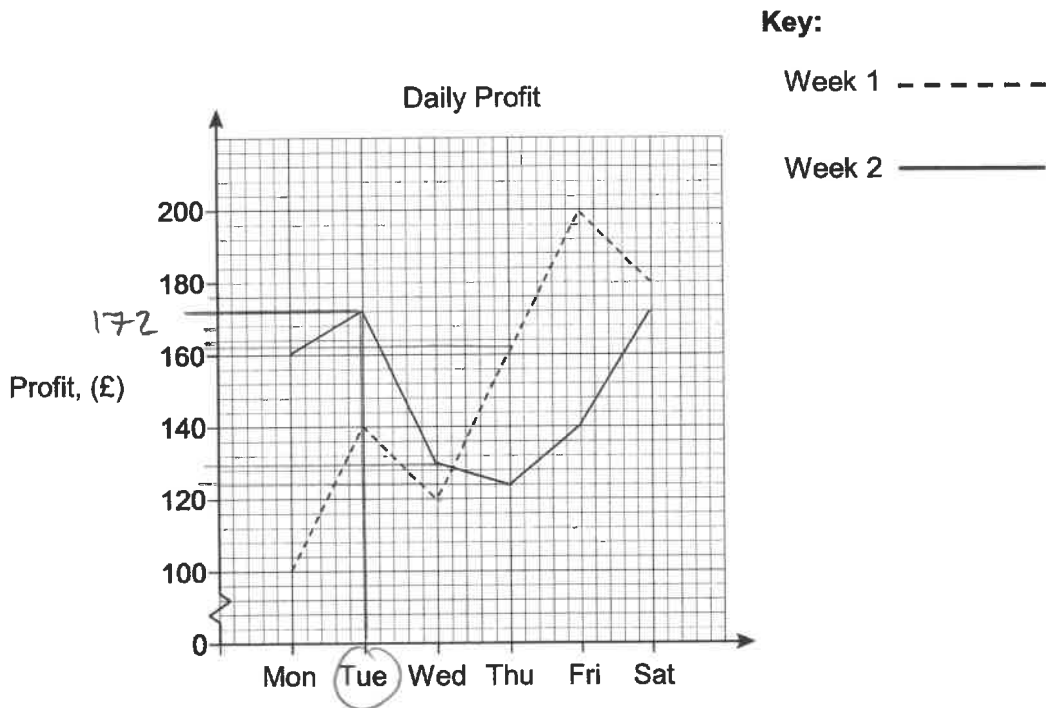
[1 mark]

INCREASES THE NUMBER OF DOTS.

Turn over for the next question

Turn over ►

- 18 The graph shows a shop's daily profit over two weeks.



- 18 (a) Circle the profit on Tuesday of week 2

[1 mark]

£140

£163

£166

£172

£178

SCALE ON y axis IS 1 SQUARE = 4

- 18 (b) The total profit on Mondays for the two weeks was £260

Which day had the highest total profit for the two weeks?

[2 marks]

PROFIT

$$\text{TUES} = 172 + 140 = 312$$

$$\text{FRI} = 140 + 200$$

$$\text{WED} = 120 + 130 = 250$$

$$= 240$$

$$\text{THUR} = 124 + 162 = 286$$

$$\text{SAT} = 172 + 180$$

$$= 352$$

Answer SATURDAY

£ 352

18 (c) The manager decides to close the shop on one day each week.

Use the graph to decide which day she should close.

Give a reason for your answer.

[2 marks]

Answer WEDNESDAY

Reason IT HAS THE LOWEST TOTAL PROFIT
OVER THE TWO WEEKS

18 (d) Ruby says about the graph,

"Friday week 1 is 6 large squares high.

Friday week 2 is 3 large squares high.

So, the profit on Friday week 1 is double Friday week 2"

Is she correct?

Give a reason for your answer.

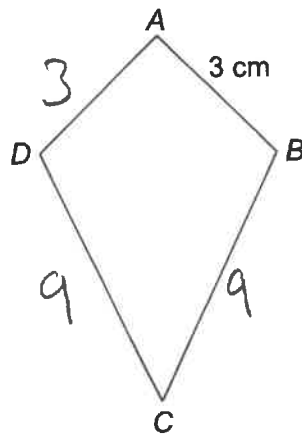
[2 marks]

No, THE Y AXIS IS BROKEN AND DOES NOT
SHOW SQUARES FOR 20, 40, 60 AND 80

Turn over for the next question

Turn over ►

19

The perimeter of kite $ABCD$ is 24 cmNot drawn
accurately

$$24 - 3 - 3 = 18$$

$$18 \div 2 = 9$$

The length of side AB is 3 cmWork out the length of side CD .

Circle your answer.

3 cm

8 cm

9 cm

21 cm

[1 mark]

20

Kris is simplifying $3n^5 \times 2n^4 = 3 \times 2 \times n^5 \times n^4$ His answer is $5n^{20} = 6 \times n^{5+4}$

Identify any mistakes he has made.

$$= 6n^9$$

[2 marks]

HE HAS ADDED 3 AND 2 INSTEAD OF
MULTIPLYING.

HE HAS MULTIPLIED 5 AND 4 INSTEAD OF
ADDING THE POWERS (INDICES)

21 Volume of a sphere = $\frac{4}{3}\pi r^3$

A steel sphere, radius 9 cm, is shown.



21 (a) Work out the volume of the sphere.

[2 marks]

$$\frac{4}{3} \times \pi \times 9^3 = \frac{4}{3} \times \pi \times 9 \times 9 \times 9 = 972\pi$$

$$= 3053.628\dots$$

Answer 972π or 3053.63 cm^3
or 3053.6
or 3054

21 (b) The density of the steel is 7.8 grams/cm^3

$$D = \frac{m}{V}$$



Work out the mass of the sphere.

[2 marks]

$$D = 7.8 \quad V = 3053.63$$

$$m = D \times V = 7.8 \times 3053.63$$

Answer = 23818.3 grams

Turn over for the next question

Turn over ►

- 22 Dev invests £1500 for 2 years.
The compound interest rate is 1.6% per year.

$$\text{MULTIPLIER} = \frac{100 + 1.6}{100} = 1.016$$

- 22 (a) Which calculation works out the total value after 2 years?

Circle your answer.

$$\text{SO } 1500 \times 1.016 \times 1.016 = 1500 \times 1.016^2 \quad [1 \text{ mark}]$$

$$£1500 \times 1.6 \times 2$$

$$£1500 \times 1.6^2$$

$$£1500 \times 1.016 \times 2$$

$$£1500 \times 1.016^2$$

- 22 (b) Emma invests £1500 for 2 years.

The interest rate is

1.8% for the first year

1.3% for the second year.

$$\text{MULTIPLIER} = \frac{100 + 1.8}{100} = 1.018$$

$$= \frac{100 + 1.3}{100} = 1.013$$

Whose investment is worth more after 2 years?

You must show your working.

[4 marks]

$$\text{EMMA: } 1500 \times 1.018 = 1527$$

$$1527 \times 1.013 = 1546.85 \text{ (2 dp)}$$

$$\text{DEV: } 1500 \times 1.016^2 = 1548.38 \text{ (2 dp)}$$

Answer

DEV'S IS WORTH MORE

23 (a) Expand and simplify

$$(x+5)(x-4)$$

[2 marks]

$$\begin{aligned} & x \times x + x \times (-4) + 5 \times x + 5 \times (-4) \\ &= x^2 - 4x + 5x - 20 \\ &= x^2 + x - 20 \end{aligned}$$

Answer $x^2 + x - 20$

23 (b) Solve $(x-8)(x+7) = 0$

[1 mark]

SOLUTIONS: $x = 8$
 $x = -7$

Answer $8, -7$

24 Write 225 as the product of its prime factors.

[2 marks]

$$\begin{array}{c} \swarrow \quad \searrow \\ 5 \quad 45 \\ \swarrow \quad \searrow \\ 5 \quad 9 \\ \swarrow \quad \searrow \\ 3 \quad 3 \end{array}$$

or

$$\begin{array}{c} 225 \\ \swarrow \quad \searrow \\ 15 \quad 15 \\ \swarrow \quad \searrow \quad \swarrow \quad \searrow \\ 3 \quad 5 \quad 3 \quad 5 \end{array}$$

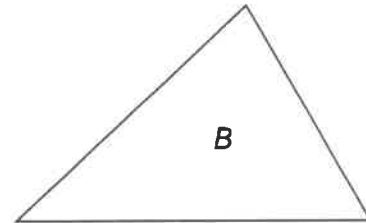
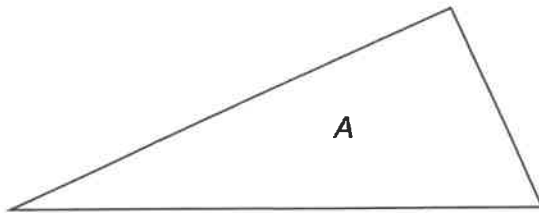
Answer $225 = 3 \times 3 \times 5 \times 5$

Turn over ►

25 The angles in triangle A are in the ratio $1 : 2 : 3$

The angles in triangle B are in the ratio $4 : 5 : 6$

Not drawn
accurately



Jack says,

"The middle number in each ratio is one third of the total,
so one of the angles in each triangle is 60 degrees"

Is he correct?

Show working to support your answer.

[2 marks]

For A : $1 : 2 : 3$ ADD = 6 PARTS

$$180^\circ \div 6 = 30^\circ$$

SO ANGLES FOR A ARE: $1 \times 30 = 30$

$$2 \times 30 = 60$$

$$3 \times 30 = 90$$

$$= 30 : 60 : 90$$

For B : $4 : 5 : 6$ ADD = 15 PARTS

$$180 \div 15 = 12^\circ$$

SO ANGLES ARE : $4 \times 12 = 48^\circ$

$$5 \times 12 = 60^\circ$$

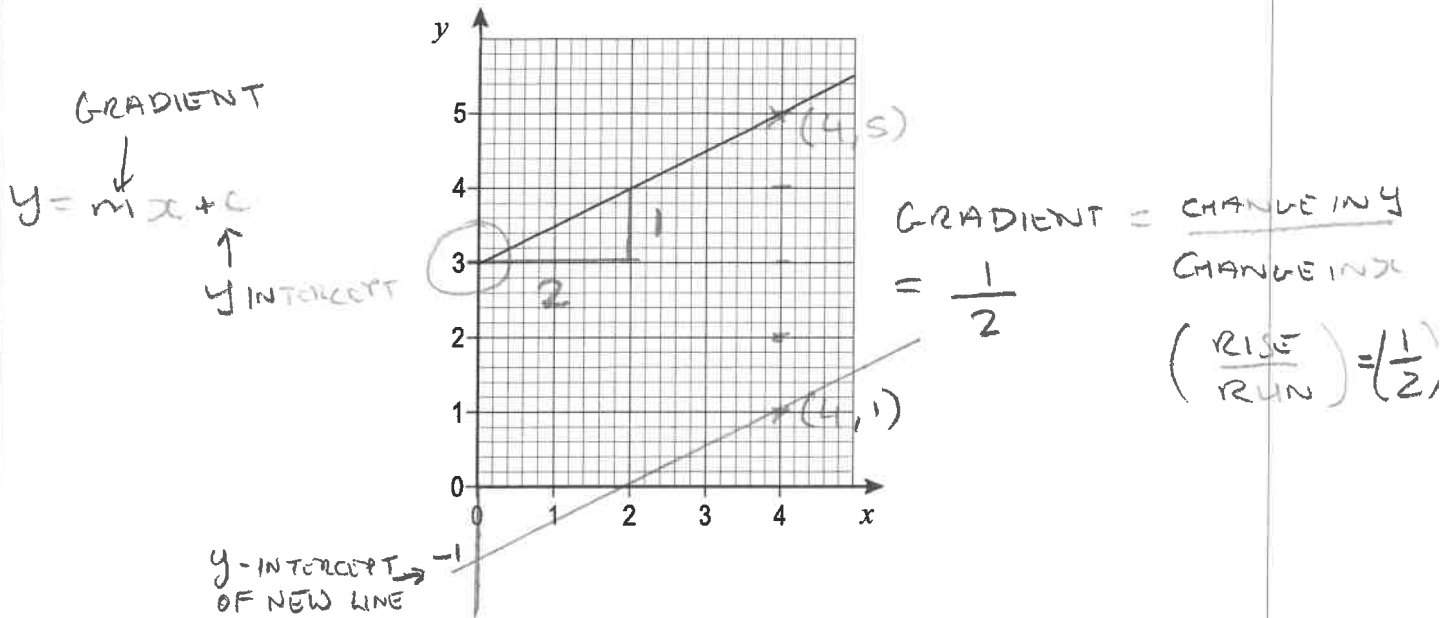
$$6 \times 12 = 72^\circ$$

$$= 48^\circ : 60^\circ : 72^\circ$$

SO MIDDLE ANGLE IN BOTH IS 60°

26

Here is the graph of a straight line.



26 (a) Work out the equation of the line.

[2 marks]

y INTERCEPT = 3 (WHERE IT CROSSES y AXIS)

$m = \frac{1}{2}$

$y = \frac{1}{2} x + 3$

Answer

26 (b) Work out the coordinates of the y-intercept of the line that

is parallel to the line in part (a)
and passes through (4, 1)

[2 marks]

(4, 1) is 4 BELOW (4, 5), so its
y-INTERCEPT MUST BE 4 BELOW (0, 3) so is (0, -1)

Answer (0 , -1)

Turn over for the next question

Turn over ►

27

A charity collection was made.

Information about the amounts given by men is shown in the table.

Amount, x (£)	Midpoint	Number of men	
$0 \leq x < 5$	2.5 x	11 =	27.5
$5 \leq x < 10$	7.5 x	7 =	52.5
$10 \leq x < 15$	12.5 x	2 =	+ 25
		Total = 20	105

↑ ADD ↓

The mean amount given by **women** was £6.30 per person.

Compare the mean amounts given by men and women.

[4 marks]

$$\text{MEAN FOR MEN} = 105 \div 20 = \underline{\underline{\pounds 5.25}}$$

WOMEN GAVE MORE

END OF QUESTIONS**Copyright Information**

For confidentiality purposes, from the November 2015 examination series, acknowledgements of third party copyright material will be published in a separate booklet rather than including them on the examination paper or support materials. This booklet is published after each examination series and is available for free download from www.aqa.org.uk after the live examination series.

Permission to reproduce all copyright material has been applied for. In some cases, efforts to contact copyright-holders may have been unsuccessful and AQA will be happy to rectify any omissions of acknowledgements. If you have any queries please contact the Copyright Team, AQA, Stag Hill House, Guildford, GU2 7XJ.

Copyright © 2016 AQA and its licensors. All rights reserved.