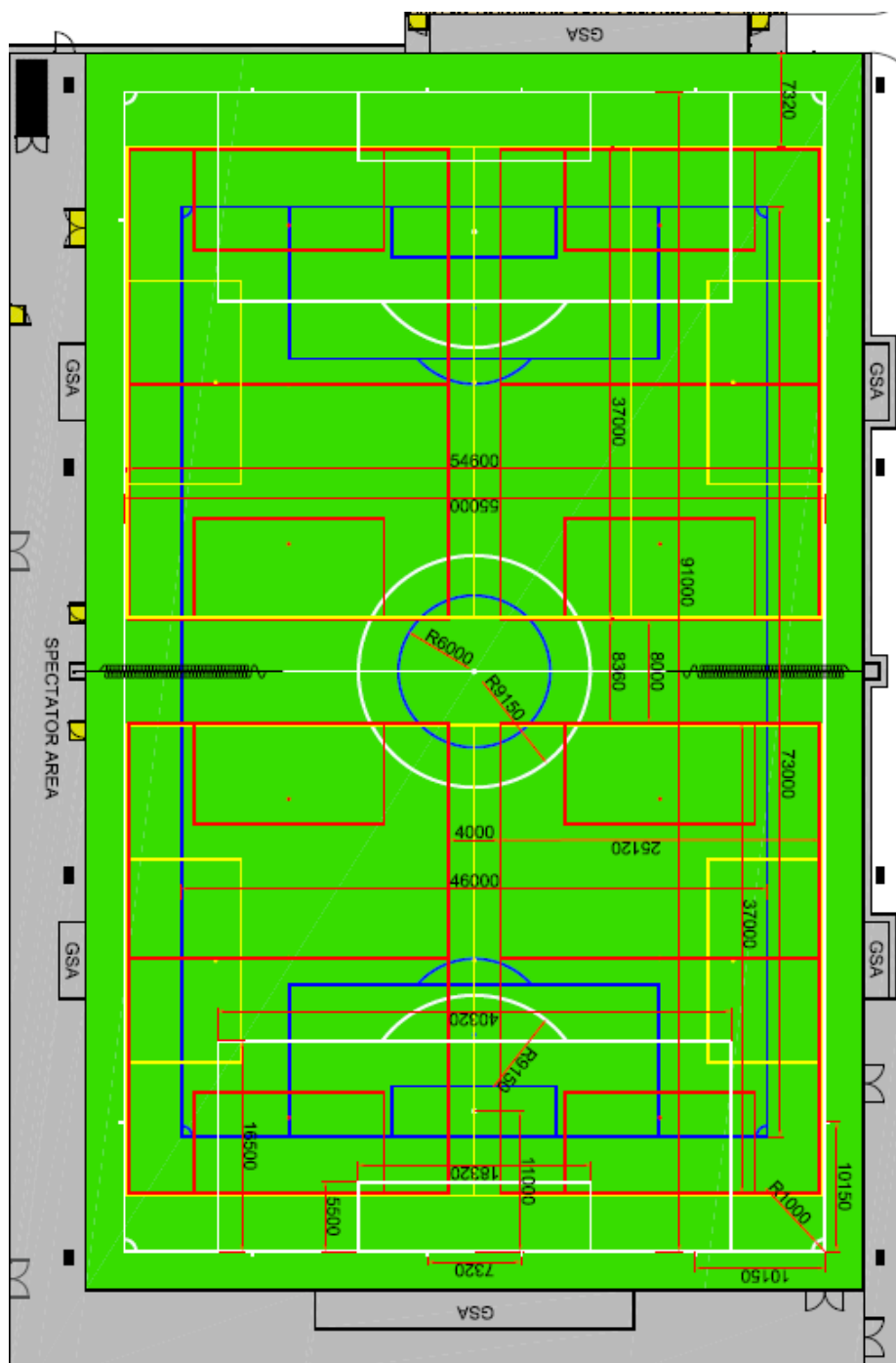


3G pitch markings

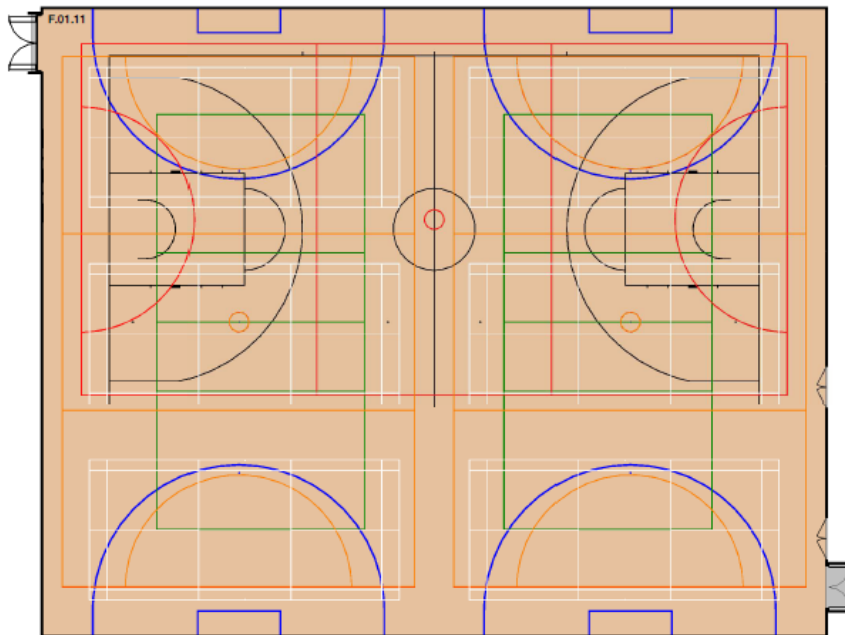


Marking colour	Game format	Number of pitches	Pitch proportion	Pitch dimensions	Goal size
White	11 v 11	1	Whole pitch	91m x 55m*	7.32m x 2.44m
Blue	9 v 9	1	Whole pitch	73m x 46m	4.88m x 2.13m
Yellow	7 v 7	2	Half pitch	55m x 37m	3.66m x 1.83m
Red	5 v 5	4	Quarter pitch	37m x 27m	

*11v11 pitch meets the minimum pitch size for teams competing at Step 7 in the National League System (minimum of 90m x 45m plus run-offs).

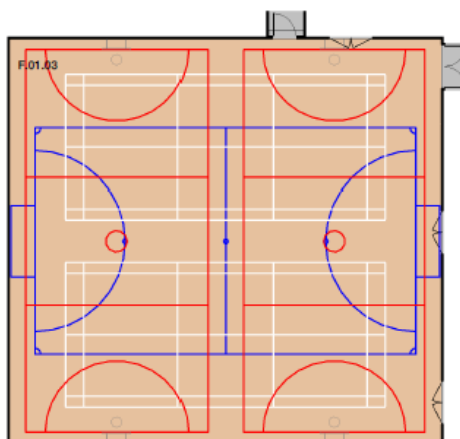
Sports hall layouts

Six-court sports hall



Marking colour	Sport	Court size
White	Badminton	Full size (6.1m x 13.4m)
Green	Volleyball	Full size (11.0m x 18.0m)
Blue	5-a-side football	Full size (16.9m x 27.1m)
Black	Basketball	Full size (15.0m x 28.0m)
Red	Netball	Full size (15.25m x 30.5m) with slightly reduced run-off behind goals
Orange	Netball practice	Reduced length (15.25m x 23.0m)

Two-court sports hall



Marking colour	Sport	Court size
White	Badminton	Full size (6.1m x 13.4m)
Blue	Mini-futsal	Approximately half size (9.5m x 16.0m)
Red	Mini-netball	Approximately half size (7.625m x 16.075m)